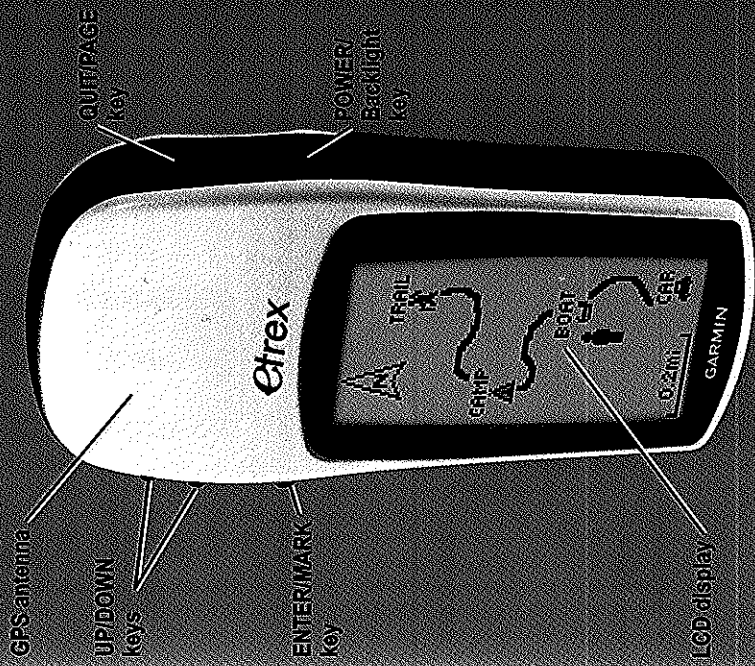


eTrex H

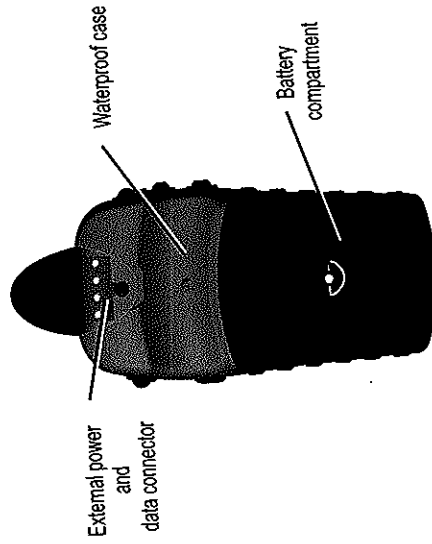
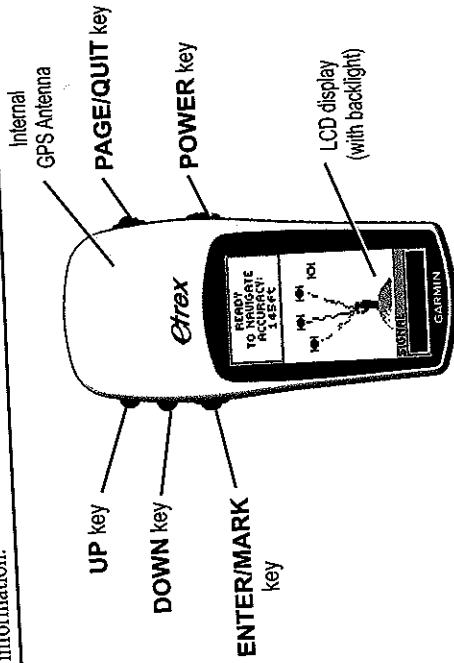
personal navigator



Key Functions

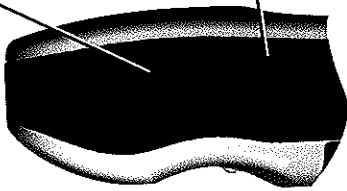
Overview

WARNING: See the *Important Safety and Product Information* sheet in the product box for product warnings and other important information.



UP/DOWN keys:

- Select options on pages and menus
- Adjust Contrast on the SkyView page
- Zoom in and out on the Map page
- Cycle through trip computer data on the Pointer page

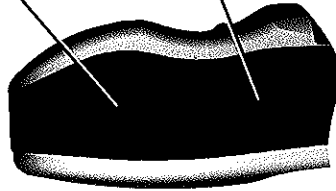


ENTER key:

- Confirms data entry or menu selections
- Displays options on main pages
- Press and hold the ENTER button to activate the Mark Waypoint page

PAGE key:

- Switches display pages
- Allows you to exit/quit a function



POWER key:

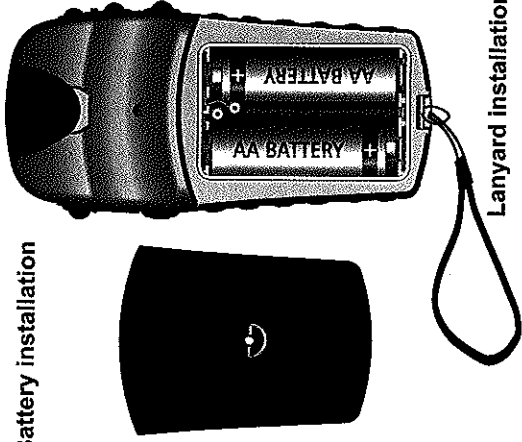
- Press and hold to turn the unit on/off
- Press to turn the display backlight on/off

Start Up

To install batteries:

1. Remove the battery cover by turning the locking ring counter-clockwise and pulling out.
2. Insert two AA batteries (alkaline or NiMH), observing proper polarity.

Battery installation



Lanyard installation

To install the lanyard:

1. Remove the battery cover and place the loop of the lanyard through the slot in the base of the unit.
2. Route the strap through the loop, and pull tight.

To turn on the backlight:

1. Press and release **POWER** from any screen. The backlight stays on for 30 seconds.

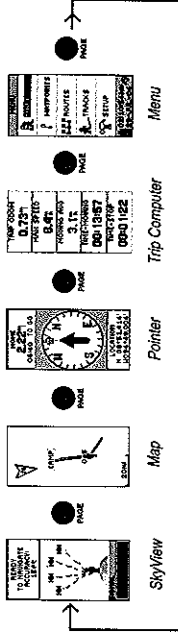
To adjust the contrast:

1. Press **PAGE** until the SkyView page appears.
2. Press **UP** to darken, and **DOWN** to lighten the screen.

Basic Operation

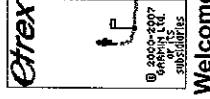
To select a page:

1. Press **POWER** to turn on the unit, and then press **PAGE/QUIT** to move through the SkyView, Map, Pointer, Trip Computer, and Menu pages.

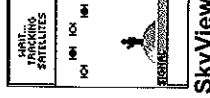


To find your current location:

1. Take your eTrex to an area with a clear view of the sky.
2. Press and hold **POWER** to turn the unit on.
3. Allow about a minute for the eTrex to get a location fix (initialization) using satellites overhead.
4. A **WAIT TRACKING SATELLITES** message appears on the SkyView page, followed by a **READY TO NAVIGATE** message when a location fix has been attained.



Welcome Page



SkyView Page

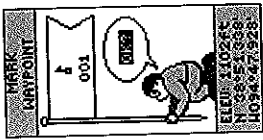


Ready To Navigate

Waypoints

Pointer Page

Use the Pointer page for guidance to a GOTO destination. The pointer gives direction to the destination. Walk in the direction of the pointer until it aligns with the direction line at the top of the compass ring. When the pointer is straight up, you are on the correct track to your destination.



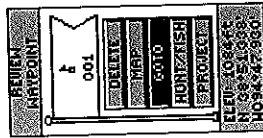
Mark Waypoint Page

To mark a waypoint:

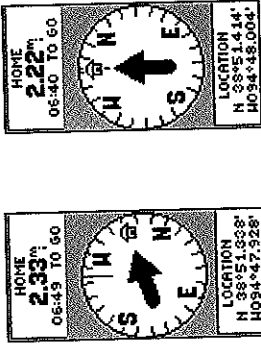
1. Press and hold **ENTER** to open the Mark Waypoint page.
2. Select **OK**, and press **ENTER** to mark as a waypoint.

To GOTO a waypoint:

1. Press **PAGE** and switch to the Menu page. Press **UP** or **DOWN** to select **WAYPOINTS**.
2. Press **UP** or **DOWN** to select the tab containing the waypoint you want to **GOTO**, and press **ENTER**.
3. Press **UP** or **DOWN** to select **GOTO**, and press **ENTER**.



Review Waypoint Page



Move in the direction of the pointer until it points straight up. When the pointer is vertical, you are on track.

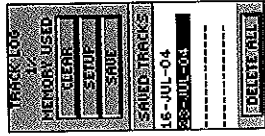
To quit a GOTO:

1. Press **PAGE** and switch to the Pointer page.
2. Press **ENTER** to view the options menu.
3. Select **STOP NAVIGATION**, and press **ENTER**.

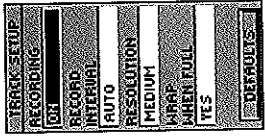


Stop Navigation

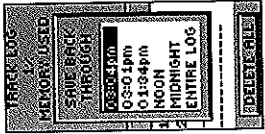
Track Log



Track Log Page



Track Setup



Save Track Options

To setup a Track:

1. From the Menu page, select **TRACKS**, and press **ENTER**.
2. Select **SETUP**, and press **ENTER**.
3. Press **UP** or **DOWN** to highlight each setup option and make a choice for each. Press **PAGE/QUIT** to return to the Track Log page.

To save the current Track Log:

1. Select **SAVE**, and press **ENTER**. The **SAVE BACK THROUGH** window opens to save the track for a time frame or the entire track log.
2. Press **UP** or **DOWN** to select an option, and press **ENTER**. The saved track now appears on a sub-page.
3. Press **UP** or **DOWN** to select **OK**, and press **ENTER**. The track is saved and appears on the Saved Tracks list of the Track Log page.

To clear the Track Log:

1. Press **UP** to select **CLEAR**, and press **ENTER**.
2. Press **DOWN** to select **YES**, and press **ENTER**.

Please visit www.garmin.com for additional documentation and information.